



Serving Western NC.
shindlersolutions.com
(828) 367-7133

HLA Report



356 Oakview Park Rd
Asheville, NC 28803
2 FEBRUARY 2024

356 Oakview Park Rd, Asheville, NC28803

First Floor



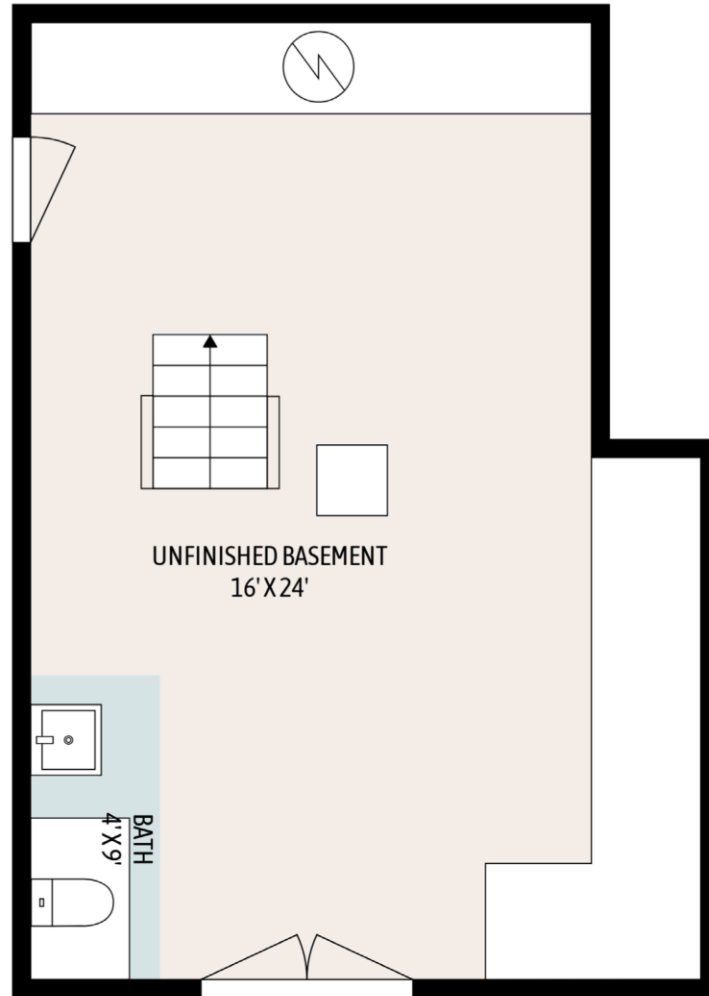
Living Area	
First Floor	1220.42 Sq ft
Total Living Area (Rounded):	1220 Sq ft
Non-living Area	
Shop	510 Sq ft
Unfinished basement	562.8 Sq ft
Open Porch	30 Sq ft
Open Porch	98.4 Sq ft
Low ceiling	119.84 Sq ft

Measurements are produced in accordance with NCREC Residential Square Footage Guidelines using laser measuring tools and LiDAR devices; deemed reliable but not guaranteed. Not intended for construction. Building and septic permits are not checked for the purposes of this report. Listing agent should review the completed work to verify that the HLA calculation includes only areas that qualify as HLA.

Living Area	
First Floor	1220.42 Sq ft
Total Living Area (Rounded):	1220 Sq ft
Non-living Area	
Shop	510 Sq ft
Unfinished basement	562.8 Sq ft
Open Porch	30 Sq ft
Open Porch	98.4 Sq ft
Low ceiling	119.84 Sq ft

356 Oakview Park Rd, Asheville, NC28803

Unfinished Basement

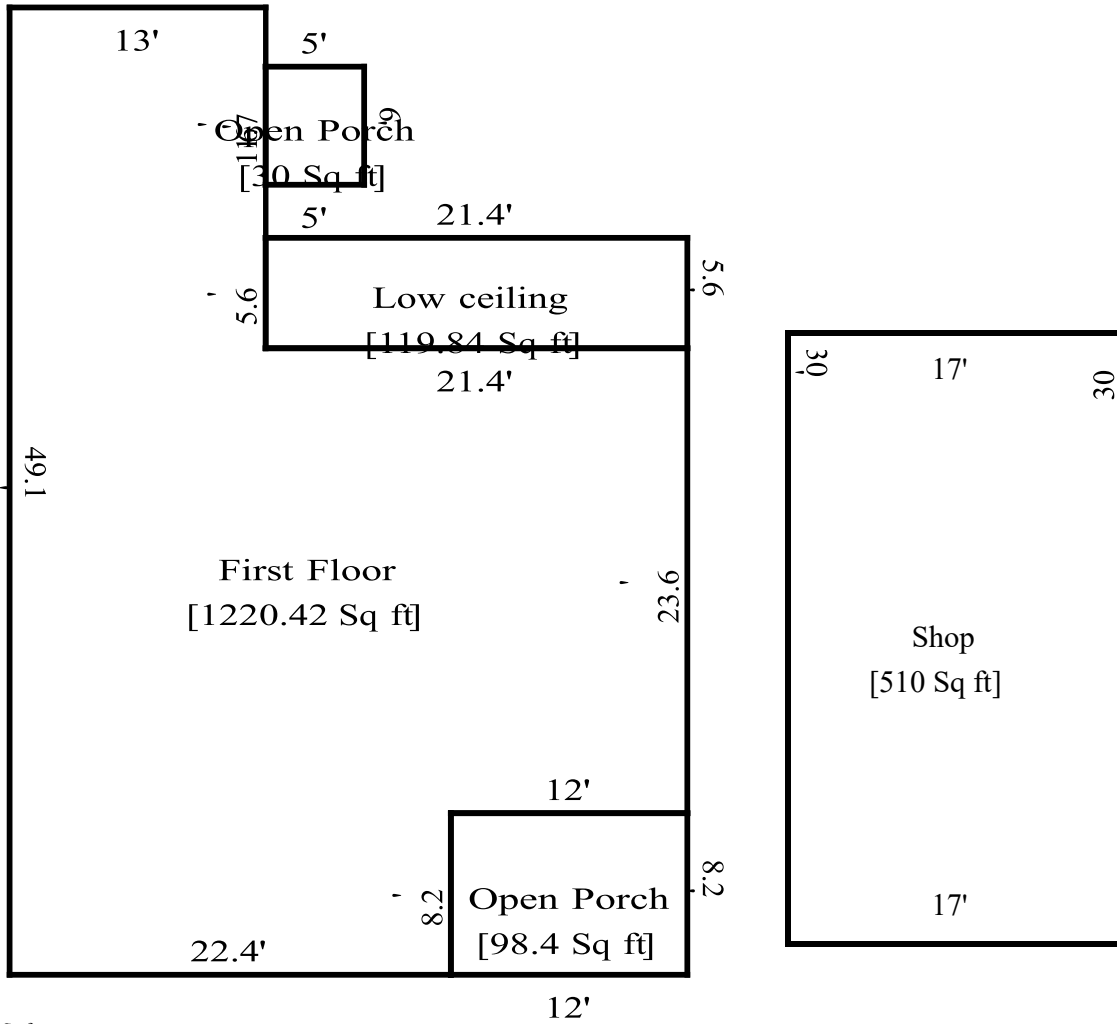


Measurements are produced in accordance with NCREC Residential Square Footage Guidelines using laser measuring tools and LiDAR devices; deemed reliable but not guaranteed. Not intended for construction. Building and septic permits are not checked for the purposes of this report. Listing agent should review the completed work to verify that the HLA calculation includes only areas that qualify as HLA.

TOTAL Sketch by a la mode

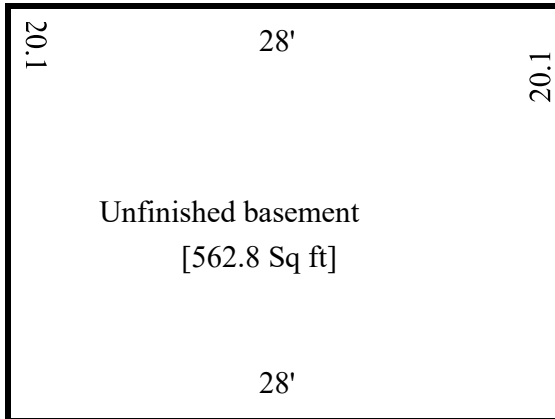
Area Calculations Summary

Living Area



First Floor 1220.42 Sq ft
 Total Living Area

(Rounded): 1220 Sq ft



Non-living Area

Shop	510 Sq ft
Unfinished basement	562.8 Sq ft
Open Porch	30 Sq ft
Open Porch	98.4 Sq ft
Low ceiling	119.84 Sq ft