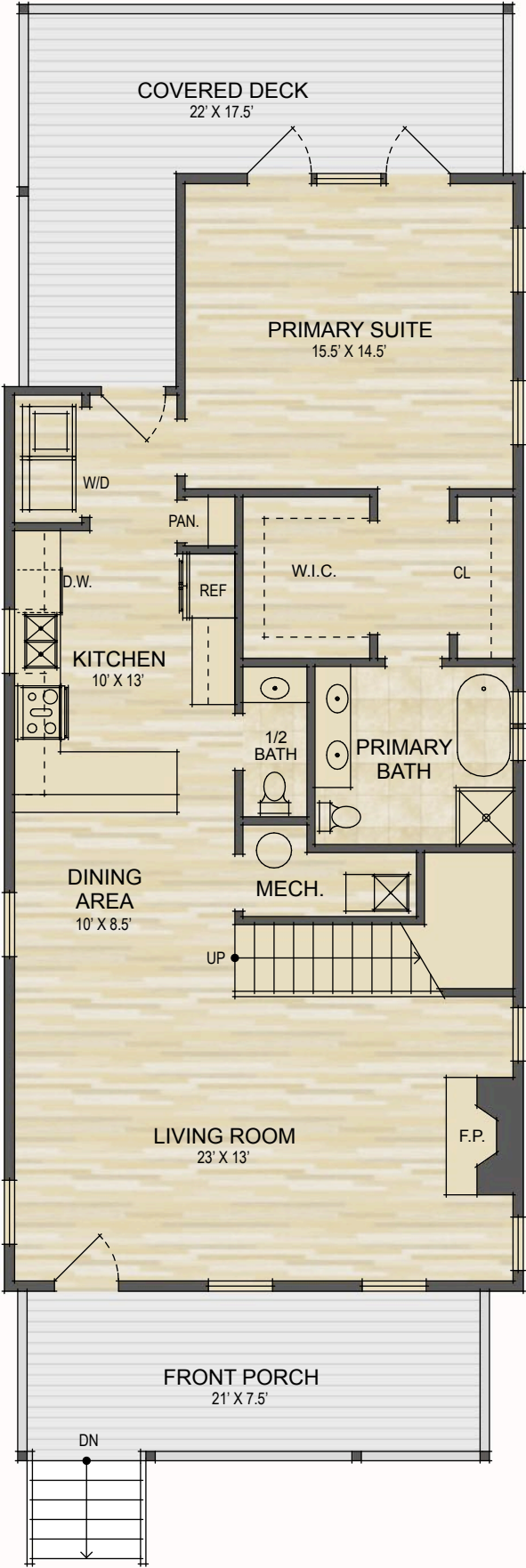


Upper Level Floor Plan



Main Level Floor Plan

520 Fisher Road
Brevard, NC

MAIN LEVEL LIVING SPACE:	1,191 SQ. FT.
LOWER LEVEL LIVING SPACE:	687 SQ. FT.
TOTAL HEATED LIVING SPACE:	1,878 SQ. FT.

UNFINHSED ATTIC STORAGE:	344 SQ. FT.
COVERED FRONT PORCH:	175 SQ. FT.
COVERED BACK DECK:	256 SQ. FT.
TOTAL UNDER ROOF:	2,653 SQ. FT.

- HEATED LIVING SPACE
- UNHEATED/UNFINISHED/*BONUS SPACE
- COVERED PORCH
- UNCOVERED DECK/PATIO

NOTES:
* - LIVING SPACE REQUIRES A MIN. OF 7'-0" CEILING HIEGHT (5'-0") BELOW A SLOPED CEILING, FINISHED SURFACES, HEATED SPACE, & DIRECT CONNECTION WITH OTHER LIVING SPACE. BONUS SPACE SHOWN MEETS SOME BUT NOT ALL OF THESE QUALIFICATIONS
1. MEASUREMENTS WERE OBTAINED VIA THE NORTH CAROLINA REAL ESTATE COMMISSION GUIDELINES.
2. DIMENSIONS ARE ROUNDED TO THE NEAREST 1/2 FOOT AND ARE APPROXIMATE.
3. INFORMATION WITHIN THESE DRAWINGS ARE INTENDED SOLEY FOR THE USE OF REALTY MARKETING. NOT FOR CONSTRUCTION.
4. FOR MORE INFORMATION REGARDING MEASUREMENTS, MARKETING FLOOR PLANS, OR REMODEL DESIGN & CONSULTING, CONTACT **WES HOGAN** AT:
FeaturedListingsWNC@gmail.com OR **828.577.191**